



# eQUEST®

## Installation & Testing Procedure

May 2009

---

It is suggested that you download eQUEST and save the setup.exe file to a location on your hard drive. It is not advisable to execute the eQUEST setup program from your browser.

If you are installing eQUEST 3.63 and if a version of eQUEST 3.63 (i.e., same version number) is already installed on your computer, uninstall the version of 3.63 on your machine before installing the new version (via Start/Control Panel/Add or Remove Programs). If older versions of eQUEST (i.e., different version number) are currently installed on your computer, they do not have to be uninstalled if you would prefer to retain them. Uninstalling eQUEST never deletes any eQUEST user project files. To install eQUEST 3.63, within Windows Explorer, double click the “eQUEST\_v3-63\_Setup.exe” file. Follow the installation wizard prompts. See the illustrations below.

**Important Note:** To better support Windows Vista users, the default installation location for many but not all eQUEST 3.63 files has changed. Only the executable files (.exe, .dll, etc.) are now installed under the Program Files directory, i.e., C:\Program Files\eQUEST 3-63. All other eQUEST program files are stored in two new locations. eQUEST user project files (e.g., PD2 and INP files) are stored in one new location (see below) while all eQUEST program data files (e.g., weather files, custom glass and utility rate library files, tutorials and reference files, etc.) are stored in a second new location. The actual location for both the user project files and the program data files is dependant on a new installation option (as described below).

**New Installation Option:** During the installation process, you are prompted to install the eQUEST data files either:

- 1) for use by anyone logged onto to the computer (“All Users”, the default option for user with administrative privileges), or;
- 2) for only ‘your’ use (“Just Me”), i.e., for users logged on using the same account you are logged on as during the eQUEST installation.

See Figure 3 below.

If “**All Users**” is selected (see Fig. 3),

your eQUEST program project files are stored under:

XP users: C:\Documents and Settings\All Users\Shared Documents\eQUEST 3-63 Projects

Vista users: C:\Users\Public\Public Documents\eQUEST 3-63 Projects

your user data files (e.g., weather data, etc.) are stored under:

XP users: C:\Documents and Settings\All Users\Shared Documents\eQUEST 3-63 Data

Vista users: C:\Users\Public\Public Documents\eQUEST 3-63 Data

If “**Just Me**” is selected (see Fig. 3),  
your eQUEST program project files are stored under:

- XP users: C:\My Documents \eQUEST 3-63 Projects
- Vista users: C:\Users\*<user name>*\Documents\eQUEST 3-63 Projects

your user data files (e.g., weather data,etc.) are stored under:

- XP users: C:\My Documents\eQUEST 3-63 Data
- Vista users: C:\Users\*<user name>*\Documents\eQUEST 3-63 Data

where *<user name>* in the path names above are replaced by the account name of the person who’s account was in use during the eQUEST installation.

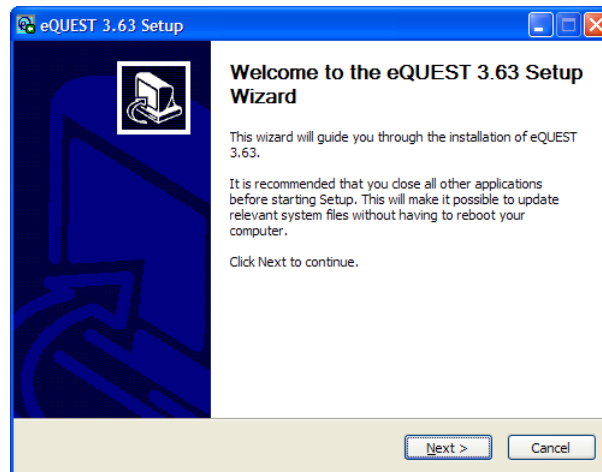
**INSTALLING eQUEST**

---

To install eQUEST version 3.63, from within Windows Explorer, double click on the “eQUEST\_v3-63\_Setup.exe” file and follow the installation wizard prompts, as illustrated in the following figures.

**Figure 1, First Install Wizard Screen**

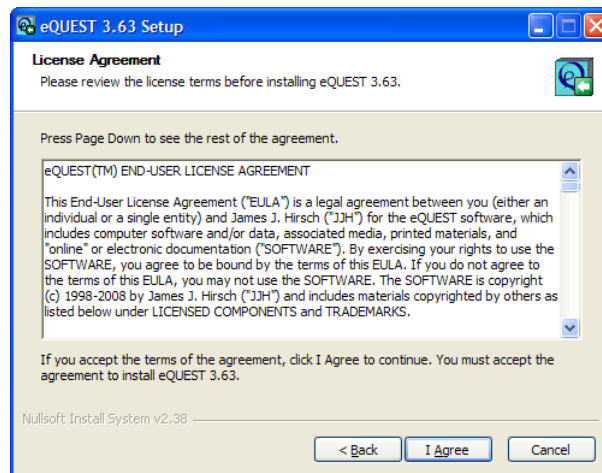
At the first screen, select “Next” to proceed the installation of eQUEST 3.63.



with

**Figure 2, License Agreement Screen**

At the second screen, after reading the end agreement, to proceed with the installation eQUEST 3.63, select “I Agree”.

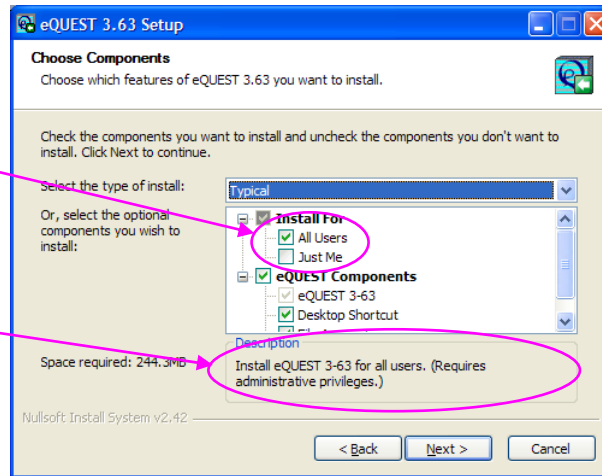


user  
of

INSTALLING eQUEST (continued)

**Figure 3, eQUEST File Locations & Components Screen**

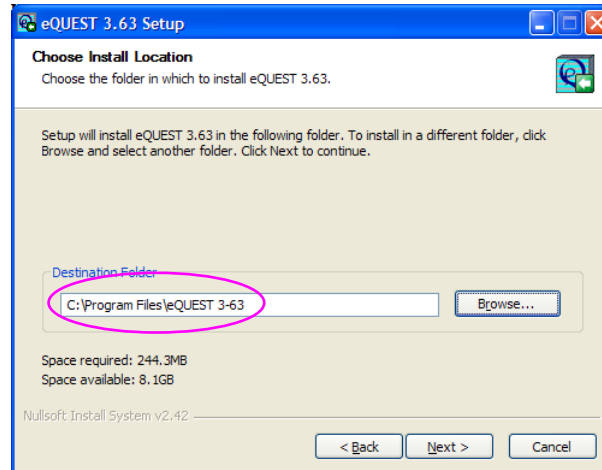
At the third screen, select either “Just Me” “All Users” (the default). **IMPORTANT:** selection will help determine where the eQUEST data and project files are installed. the “Important Note” on the first page above brief explanation. Float your mouse cursor any of the check boxes for a brief description of each option here. making your selections, click “Next” to proceed with the installation.



or this  
See for a over  
After

**Figure 4, Component Locations Screen**

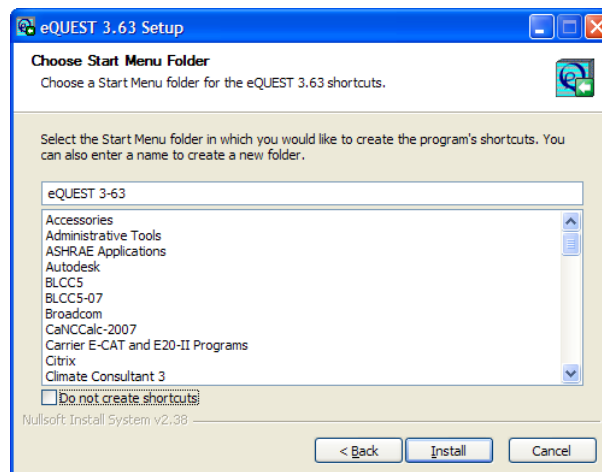
At the fourth screen, if you prefer to install executable program files (.exe, .dll, etc.) for version 3.63 in a location other than Program Files\eQUEST 3-63, substitute preferred location or folder name on this screen. Click “Next” to proceed with the installation.



the  
your

**Figure 5, Start Menu Options Screen**

At the fifth screen, indicate your preferred for the Start Menu folder that will contain eQUEST launch icon (default: eQUEST). Click “Install” to proceed with the installation (typically takes up to a minute to complete).

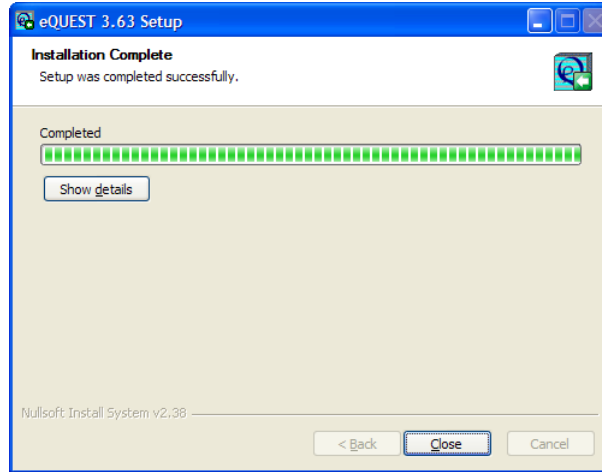


name the 3.63).

**INSTALLING eQUEST (continued)**

**Figure 6, Installation Complete Screen**

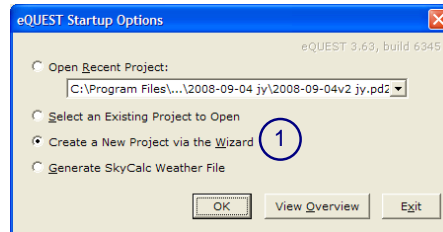
At the sixth (and final) screen, click “Close” complete the installation of eQUEST.



to

**TESTING eQUEST**

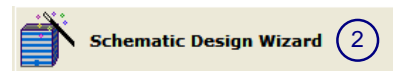
① To test the installation, start eQUEST (from desktop or from the Start button: Start / Programs / eQUEST 3-63 / eQUEST 3-63, or from Windows Explorer, the default location is "C:\Program Files\eQUEST 3-63"). The Startup Options Dialog is presented. Select "Create a New Project via the Wizard" (the default) and press OK below).



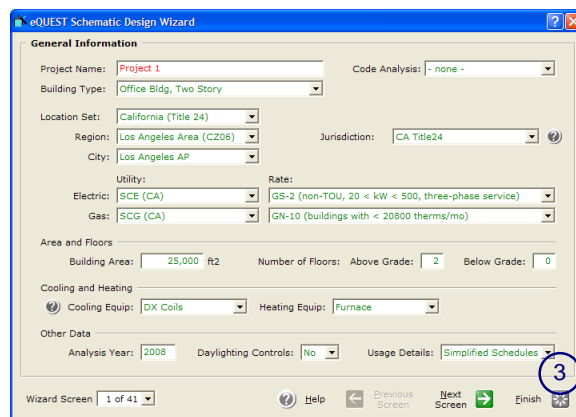
the

(see

② From the next dialog, select to run the Schematic Design Wizard.



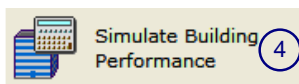
③ At the next screen (Schematic Wizard Screen 1 of 41), press Finish illustration at right). This will cause a 2 file to be written (taking 10 to 20 seconds).



(see DOE-

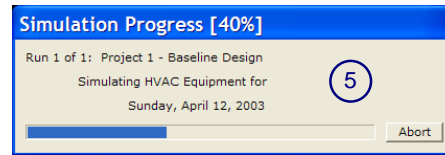
to on the (left

④ This will automatically navigate you eQUEST’s Detailed Interface. Click “Simulate Building Performance” button hand side of the screen, see below).



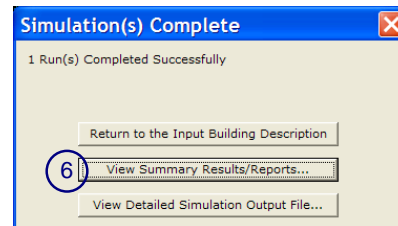
**TESTING eQUEST (continued)**

⑤ After pressing the “Simulate Building Performance” button (above), the simulation run, taking 5 to 10 seconds, depending on computer processor speed.

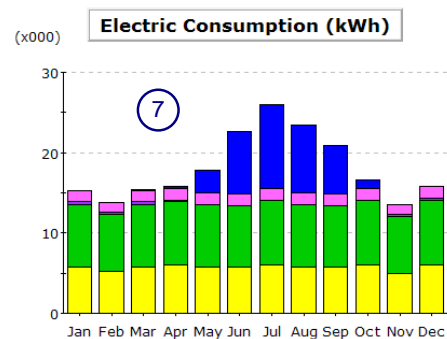


will

⑥ Upon completion of the simulation run, a dialog is presented, from which you should select “View Summary Results/Reports...”.



⑦ Selecting “View Summary Results/ Reports...” (on the previous screen) will navigate you into the results/reporting section of eQUEST. The default report will include stacked charts and some tabular data (one portion of which illustrated at right).

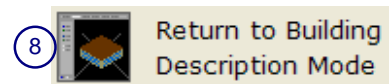


bar  
is  
are

If no error messages appear on the screen and you are able to view the default results report, the test has completed successfully.

**IMPORTANT NOTE:** Your computer must have a default printer installed, otherwise, no reports will be displayed at step ⑦ above.

⑧ To exit eQUEST, select “Return to Building Description Mode” near the upper left area of the screen, then select “File” and “Exit” from the menu at the top left of the screen.



screen,  
portion

If you have any difficulties, email [marlin.addison@doe2.com](mailto:marlin.addison@doe2.com) or [scott.criswell@doe2.com](mailto:scott.criswell@doe2.com).